



BSVillage
PISCINE - WELLNESS - OUTDOOR

CATALOGO
Prodotti per Glamping



www.bsvillage.com

CAMPING PODS

COMFORTABLE
OUTDOOR
LIVING



CAMPING POD 2.4 x 4.8

CAMPING PRODUCTS |



Recommended furnishings:

In living room 2 wooden poufs, table and bench; Bedroom with double wooden bed which can be transformed into a sofa

Small terrace:
(W x D) 600 x 321 mm

Inside are two rooms:
living room and bedroom



Try camping in a high quality camping pod, it is ideal choice for a camping place. Pod has a small entrance and two rooms inside: a 2 m length sleeping room and 2 m long sitting room. Camping pod is made from spruce. Thickness of the camping pod walls is 38 mm; thickness of the solid wood flooring is 28 mm.

STANDARD SET

- Pod made from spruce;
- Roof covered with bitumen shingles of your selected color;
- Opening window in the back wall;
- Double doors with a lock and the double glass windows;
- Two rooms inside: a sleeping and a sitting room;
- Wall partition with entrance

TECHNICAL SPECIFICATION

Shape	Pod
External dimension (W x L)	2321 x 4800mm
Total high (H)	2580 mm
Inside area	9.3 m ²
Size of windows (W x H)	806 x 704 mm
Size of doors (W x H)	1020 x 1900 mm
Size of terrace (W x D)	2321 x 600 mm
Number of windows	1
Number of opening windows	1
Group of people	2-4 persons
Weight	1880 kg
Wood	Spruce/ Thermowood
Wall thickness	38 mm

OPTIONS

ROOF COLOR



Black shingles Green shingles Red shingles

LAYOUT

- Pod with terrace: 1st room 1.9 m / 2nd room 2 m;
- Pod without terrace: 1st room 2.4 m / 2nd room 2 m.

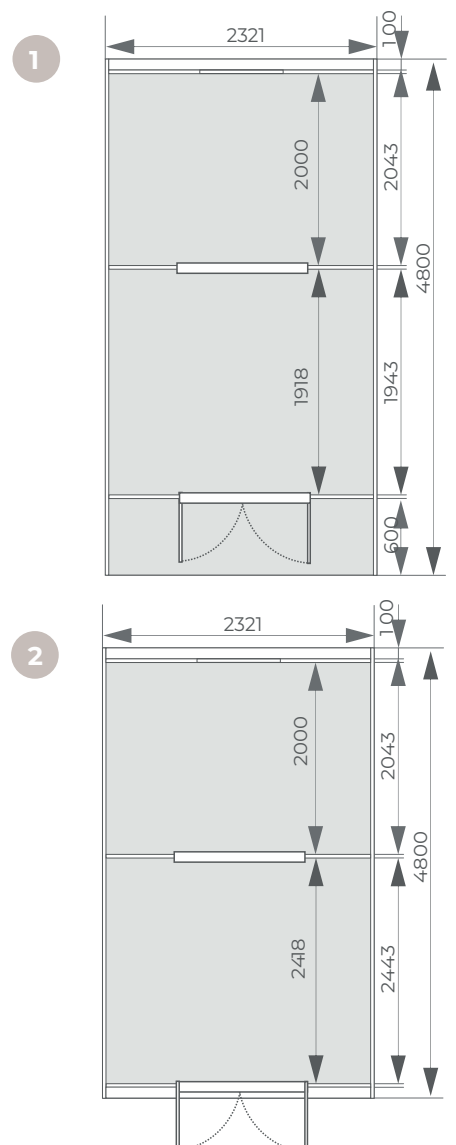
THICKNESS OF THE WALL

- 38 mm thick spruce wood standard;
- 58 mm thick spruce wood optional;

POD BACK WALL

- 38 mm spruce wood wall standard;
- Full glass back wall optional (10 mm tempered glass).

INSIDE PLAN





The front of Camping Pod 3.2 x 4.8 m



The interior of Camping Pod 3.2 x 4.8 m



Comfortable wooden pouf with storage

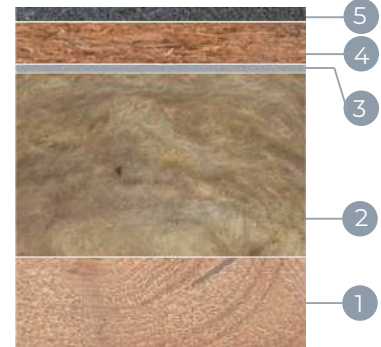
CAMPING POD 3.2 x 5.9

This Insulated Glamping pod 3.2 x 5.9m is a luxury haven for up to 2-3 people. The layout is done so that you have an intimate and private space for the toilet and shower. Large living space is divided into spaces according to need.



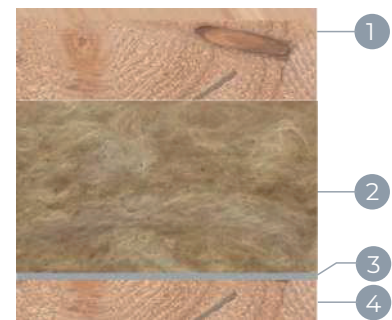
INSULATION

Wall insulation



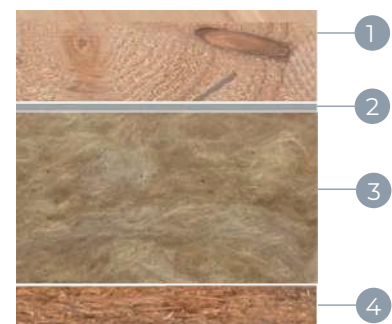
1. Wall made from spruce (38 mm). 2. Stonewool (50 mm). 3. Wind insulating film (1mm). 4. OSB panel (9 mm). 5. Bitumen shingles (3 mm).

Panel insulation



1. Wall made from spruce (38 mm). 2. Stonewool (50 mm). 3. Wind insulating film (1mm). 4. Wall made from spruce (12 mm).

Floor insulation



1. Floor made from spruce (28 mm). 2. Wind insulating film (1mm). 3. Stonewool (50 mm). 4. OSB panel (9 mm).

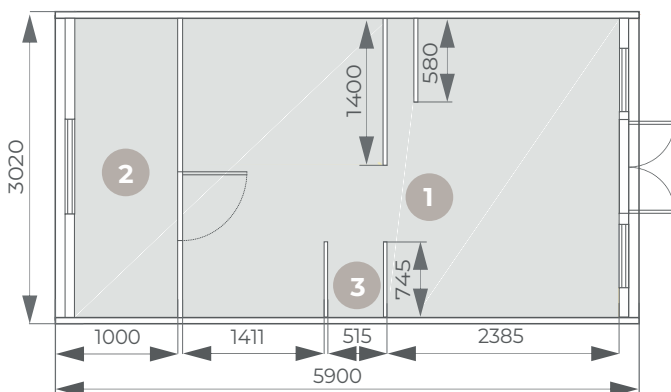
STANDARD SET

- Pod made from spruce with insulated walls;
- Insulated floor from 28 mm spruce boards;
- Inside wall dividing sleeping and living zones;
- Roof covered with bitumen shingles of your selected color;
- One double opening window in the back wall;
- Two opening windows in the front wall;
- French style double glazed doors with the lock and standard handle in the front;
- Closet or pantry area - 0.39 m²;
- Place for mini kitchen and shelves for your things;
- Large living room area for double and single beds;
- WC/shower room.

TECHNICAL SPECIFICATION

Shape	Pod
External dimension (W x L)	3200 x 5900mm
Total high (H)	2560 mm
Inside area (total)	15.80m ²
Inside area of WC/Shower room	3.04 m ²
Wall thickness	38 mm
Size of door (W x H)	1020 x 1900 mm
Size of double window (W x H)	680 x 710 mm
Size of front windows (W x H)	375 x 672 mm
Number of windows	3
Number of opening windows	3
Group of people	2-3 persons
Wood	Spruce

INSIDE PLAN



At the entrance, a cozy living area with a seating area. There will definitely fit a comfortable coffee table with puffs, and of course a single bed that can perfectly turn in to the bench. There is also a place for a mini kitchen and a large double bed for your relaxation.

For more information about the furniture please check in accessories section.

LAYOUT

1. Living space area 12.34 m²

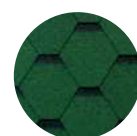
2. Shower and WC room 3.04 m²

3. Wardrobe area 0.39 m²

ROOF COLOR



Black shingles



Green shingles



Red shingles



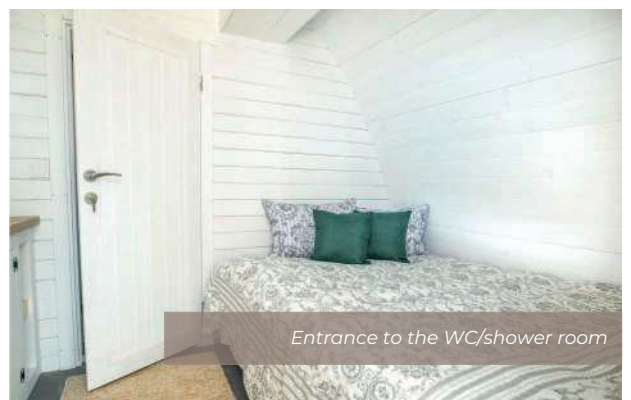
The front of Insulated Camping Pod 3.2 x 9m



The interior of Insulated Camping Pod 3.2 x 9m



Shelves are included in the standard set



Entrance to the WC/shower room





WC room in Insulated Camping Pod 3.2 x 9.m



Closet included in standard set of pod. Kitchen set is available as option in Insulated Camping Pod 3.2 x 9.m

HALF PODS

MODULAR DESIGN



HALF POD MODULAR DESIGN

2.4 x 2.4
2.4 x 3
2.4 x 4
2.4 x 4.8
2.4 x 5.9

Can be customized front, back and side walls

Five different sizes

MODULAR DESIGN

Can choose different pod sides: left or right

Can be connected with other half pod



Available front, back and side walls modification

With Half Pod's new design, you can customize each Pod wall to your needs and budget!

STANDARD SET

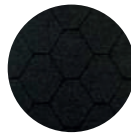
Half pod made from spruce wood;
Roof covered with bitumen shingles of your selected color;
Left or right side alignment;
Pod front, back and side walls customization;
Heat-resistant plates for heater/stove (for pods with sauna room).

TECHNICAL SPECIFICATION

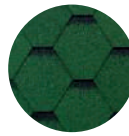
People	2-4 persons
Timber	Spruce
Shape	Pod
Room	1-2
Total height	2585 mm
Floor thickness	28 mm
Wall thickness	38 mm

OPTIONS

ROOF COLOR



Black shingles



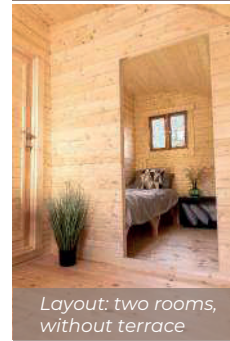
Green shingles



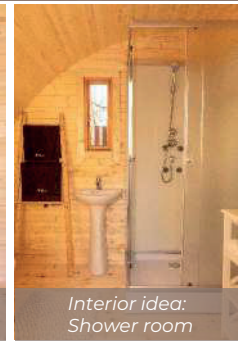
Red shingles

MORE OPTIONS

Different layouts: with or without terrace; one or two rooms inside empty or with a sauna room
5 different sizes: 2.4 x 2.4 m; 2.4 x 3 m; 2.4 x 4 m; 2.4 x 4.8 m; 2.4 x 5.9 m;
Different Half pod sides: left, right
Front/back/side walls modifications: without door and windows; glass door; 2 tempered glass windows for Sauna room
Two pods connection: 2 customized Half Pods connected through the side wall
Exterior painting



Layout: two rooms, without terrace



Interior idea: Shower room



Layout: sauna room with changing room and without a terrace

Available different layouts:

1. Empty room without terrace;
2. Empty room with terrace;
3. Two rooms without terrace;
4. Sauna room without terrace;
5. Sauna room with terrace;
6. Sauna room with changing room and without terrace.



1



2



3



4



5



6

SLEEPING BARRELS

COMFORTABLE
OUTDOOR
LIVING



BARREL COLD 3 x 4.8



INSIDE



Sleeping barrel Ice-Cold: sleeping space

STANDARD SET

- Barrel made from spruce;
- Roof covered with bitumen shingles of your selected color;
- Stainless steel tightening bands;
- One opening window in the back wall;
- Door with a lock and a hexagon glass window;
- Two rooms inside: a sleeping room and a sitting room;
- Available to make sleeping space at sitting room;
- Sleeping room with a sleeping space: 2 x 2.3 m;
- Wall partition with the entrance;
- Small benches at the entrance.

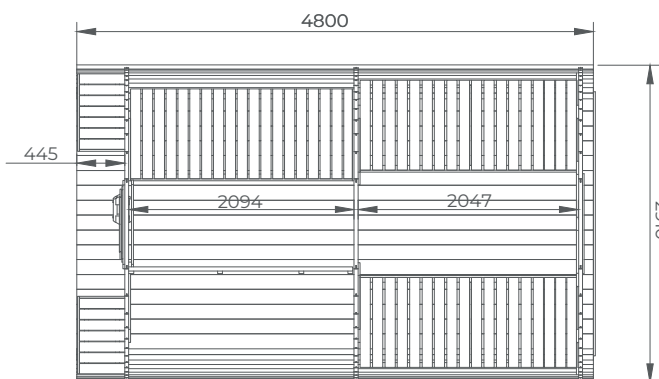
TECHNICAL SPECIFICATION

..... Shape	Oval
..... External dimension (W x L)	4860 x 2952mm
..... Total high (H)	2501 mm
..... Inside area	9.5 m ²
..... Wall thickness	38 mm
..... Size of doors (W x H)	700 x 1725 mm
..... Number of windows	1
..... Number of opening windows	1
..... Group of people	4-8 persons
..... Weight	1880 kg
..... Wood	Spruce
..... Size of terrace (W x D)	2322 x 450 mm

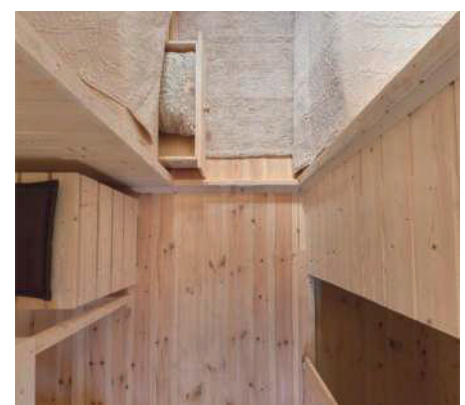


Sleeping barrel Ice-Cold: living room and WC room

INSIDE PLAN

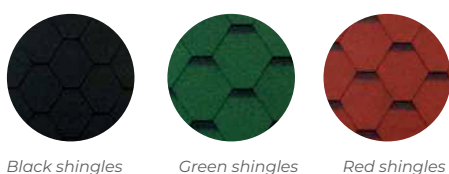


This sleeping barrel has two rooms which you can turn into any space you need. Also available have an area for WC room. Bunk beds are available in the sleeping area.



Sleeping barrel Ice-Cold: fragment from the top

ROOF COLOR



Black shingles

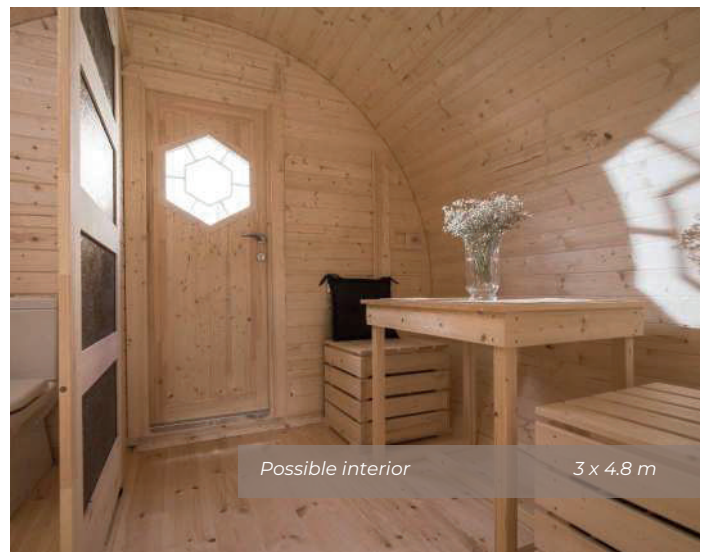
Green shingles

Red shingles

LAYOUT

Terrace: 0.3 m length terrace without benches for 0.45 m length terrace with small benches.

Slide wall Ice-Cold : wooden slide door with decorative glass.



SLEEP BARREL CLASSIC

Ø2.2 x 4

CAMPING PRODUCTS |



FURNITURE INCLUDED

30 cm wide terrace with two outdoor benches; Locable door with rustic hexagonal window from double glass



Easily inserted wooden panel between the benches - transform into a single bed

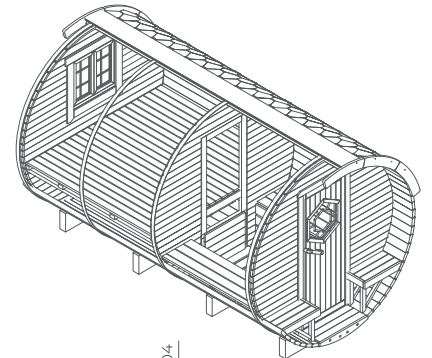
STANDARD SET

- Barrel made from spruce;
- Roof covered with bitumen shingles of your selected color;
- Stainless steel tightening bands;
- One opening double window in the back wall;
- Door with a lock and a hexagon window;
- Two rooms inside: a sleeping room and a sitting room;
- Sitting room with two benches and a sliding table;
- Available to make sleeping space at sitting room;
- Two easily inserted wooden panels between the benches - transform into a single bed;
- Sleeping room with a sleeping space: 2 x 2 m;
- Small benches at the entrance.

TECHNICAL SPECIFICATION

Shape	Round barrel
External dimension (W x L)	2236 x 4059mm
Total high (H)	2394 mm
Inside area	7.3 m ²
Wall thickness	38 mm
Size of doors (W x H)	690 x 1800 mm
Size of double window (W x H)	715 x 675 mm
Number of windows	1
Number of opening windows	1
Group of people	2-4 persons
Weight	1300 kg
Wood	Spruce

INSIDE PLAN



ROOF

6 layer bitumen tiles consists of durable and highly resistant fiber glass base coated with polymer-reinforced bitumen mix made of high quality bitumen and aggregate. The top layer of tiles is surfaced with mineral granules that lend color to the tiles and ensure high UV protection and other weather conditions resistance qualities. The granules are painted in high temperature using thermal method pigment being burned-in into the surface of granules what guarantees long durability of the color. The bottom of tiles is coated with adhesive polymer-reinforced bitumen layer protected with easily removed silicon membrane.

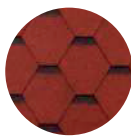
ROOF COLOR



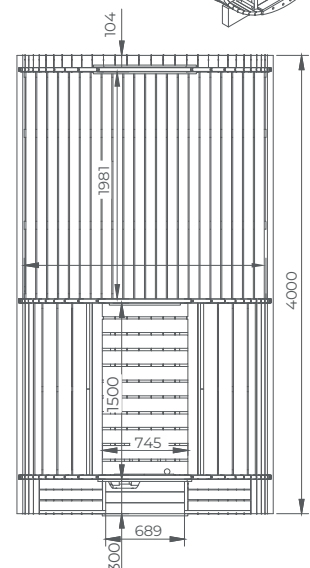
Black shingles



Green shingles



Red shingles



SLEEP BARREL $\varnothing 2.2 \times 4.4$

WITH BUNK BED MAXI FAMILY



FURNITURE INCLUDED



Sleeping Barrel 2.2 x 4.4 m with bunk bed. More light inside because of the 2 opening windows in the back wall

STANDARD SET

- Barrel made from spruce;
- Roof covered with bitumen shingles of your selected color;
- Stainless steel tightening bands;
- Two opening windows in the back wall;
- Two opening windows in front wall;
- Door with a lock and a double glass window;
- Two rooms inside: a sleeping room and a sitting room, 5-6 sleeping places;
- Sitting room with two benches;
- Sleeping room with a bunk bed;
- All furniture included in the price;
- Ventilation.

TECHNICAL SPECIFICATION

Shape	Barrel
External dimension (W x L)	$\varnothing 2245 \times 4400$ mm
Total high (H)	2394 mm
Inside area	9 m ²
Wall thickness	38 mm
Size of door (W x H)	710 x 1800 mm
Size of front windows (W x H)	380 x 657 mm
Size of back windows (W x H)	880 x 510 mm
Number of windows	4
Number of opening windows	4
Group of people	4-8 persons
Weight	1400 kg
Wood	Spruce

INSIDE PLAN



High between the bunk bed is 824 mm. First floor bed width is 1600 mm and second floor bed width is 2000 mm.

AVAILABLE CLASSIC LAYOUT

Available model also in Classic layout - with one double sleeping bed.

Made from a spruce wood and feels very nature-friendly. Sleeping barrel has two rooms: one is for sleeping and another one for sitting, dining and storing your things. With this barrel your camping place will look different, nature-friendly and cozy.

Two adults and two children can easily fit in our sleeping barrel. The size of sleeping space is 2 x 2 m. The living room is very spacious and has two long benches for it. The size of bench is (D x L) 600 x 2086 mm. There is a sliding table in the sitting room; it can be hidden when it is not needed. The sleeping barrel has one opening window in the back wall and two opening windows in front. The lockable door with a big rectangular window.

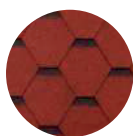
ROOF COLOR



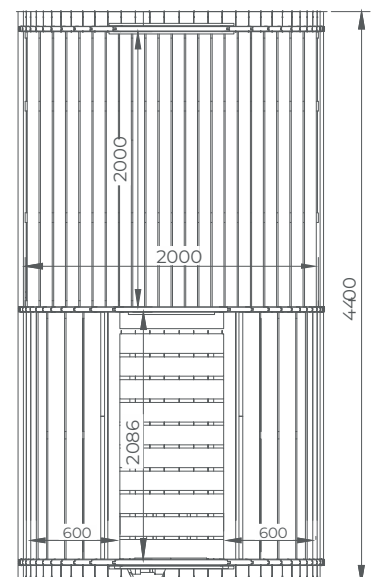
Black shingles



Green shingles



Red shingles



LIGHT CAMPING 2.4x 4.3



TWO ROOMS
INSIDE



As option you can have free standing furniture and product will be with 2 separate bedrooms

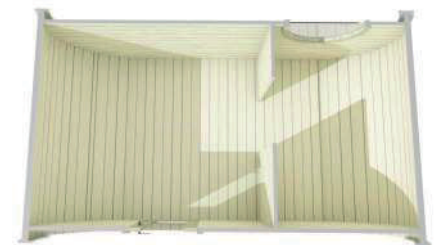
STANDARD SET

- Delight Camping is made from spruce;
- Roof covered with bitumen shingles of your selected color;
- Stainless steel tightening bands;
- Round window in a back wall;
- Door with a lock and big tempered glass window;
- Two rooms inside 1st room size is 5.44 m²; 2nd room size 3.30 m²;
- 2 pcs of ventilation.

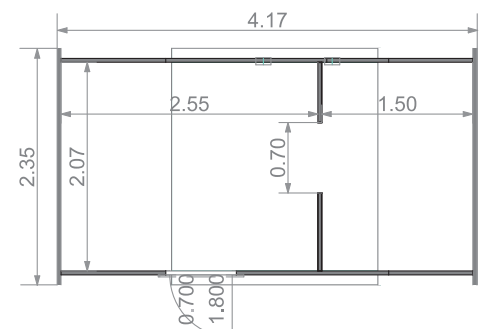
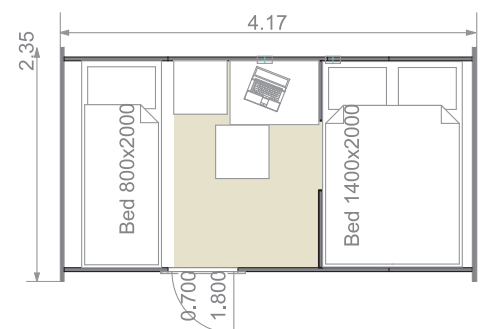
TECHNICAL SPECIFICATION

Shape	Oval
External dimension (W x L)	4290 x 2480mm
Total high (H)	2500mm
Inside area	5.6 m ²
Wall thickness	38 mm
Size of door (W x H)	700x 1800 mm
Size of back window (W x H)	Ø 850mm
Number of window (not opening)	1
Group of people	6-8 persons
Weight	1200 kg
Wood	Spruce

INSIDE VIEW



PLAN



Standard back wall



Interior example of Delight Camping

ROOF COLOR



Black shingles



Green shingles



Red shingles



DOMES

UPGRADE YOUR SPACE
TO NEXT LEVEL



DOMES

Waterproof cover (PVC)
with selected color:
white or beige

Laminated roof panels
(inside) with insulation (as extra)

PVC triangle (with mesh)
opening windows (as extra)

Panoramic transparent
part cover (PVC)



**ONE
ROOM
INSIDE**

STANDARD SET

Spruce wood walls and dome frame construction (triangle);

Weatherproof cover (PVC) with selected color of your choice: white or beige

Panoramic transparent part cover (PVC)

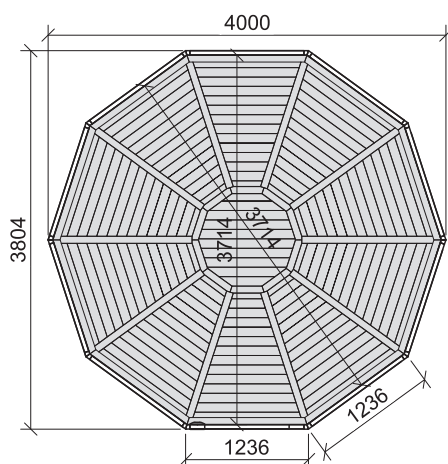
Wooden door with a big window

Ventilation



Laminated roof panels
(inside) with insulation (as extra)

INSIDE PLAN



TECHNICAL SPECIFICATION

Room	1
External dimension (W x D)	3804 x 4000mm
Total high (H)	2710 mm
Inside area	10 m ²
Size of door (W x H)	695 x 1800mm
Wall height	620 mm
Wood	Spruce
The thickness of floor(extra)	18 mm
The thickness of walls	45 mm
The thickness of rooftriangles	45mm

OPTIONS

Available inside floor;

Inside roof panels laminated and insulated;

Terrace floor segments;

Painting: Frame construction (roof part); Walls exterior and interior;

Cover color (PVC) White and transparent; Beige and transparent



White
RAL9016



Beige
RAL1013



CUBES

SMART
MODULAR
SYSTEM



EASYCUBE



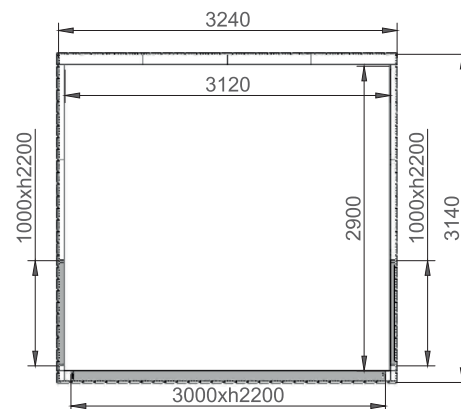
EASYCUBE 3 x 3



FRAME

The cube's solid wooden frame: front and back 45 x 95 mm; sides - 45 x 45 mm with 18 x 145 mm finishing boards make the product a sheltered lounge area. The product has an aluminum glass wall on each side and sliding doors (3 - rails) that can easily be opened in two directions!

PLAN



ROOF

The roof panels frame 45 x 120 mm is covered with 18 x 145 mm finishing boards. This type of construction withstands 295 kg/m² ≈ 2.95 kN/m². Easy Cube building roof is 2.9 m high and 10% slope. We use MIDA SELF KSK for the roof covering,

its self-adhesive elastomeric bitumen membrane covering the entire surface. Installation of the rolled roofing is a quick, simple, and safe way to cover all Cube. All you must do is to unroll, attach with nails, remove protective film and press.

STANDARD SET

- Roof panels from spruce;
- Self-adhesive bitumen membrane for roof covering;
- Roof, door and windows tin finishing;
- Wall panels from spruce with impregnated bottom parts;
- 2 pcs of aluminum glass wall Alutech (1000x2200 mm);
- 1 pc aluminum sliding doors system Alutech (3 rails).

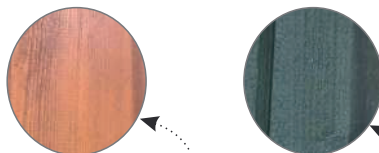
TECHNICAL SPECIFICATION

Shape	4 corners
External dimension (W x L)	3286 x 3155 mm
Total high (H)	2855 mm
Inside area	9 m ²
Room	1
Size of sliding door (W x H)	3000 x 2200 mm
Size of glass wall (W x H)	1000 x 2200 mm
Group of people	6 persons
Weight	900 kg
Wood	Spruce

OPTIONS

PAINTED PRODUCT

PROFESSIONALLY SPRAYED FINISH The high-quality preservative finish is professionally spray applied in the factory to three sides of the board. More than 20 different colors, choose from **stains and paints**



The wood stain treatment shows the wood texture. The paint will cover the texture of the wood.

AVAILABLE TO ORDER FLOOR

Terrace floor Made from corrugated spruce wood with frame.

Tongue and groove floor (28 mm).



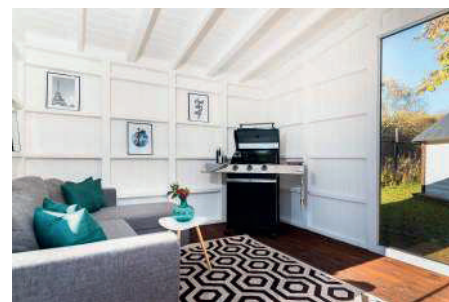
Terrace floor (as option)



Front view



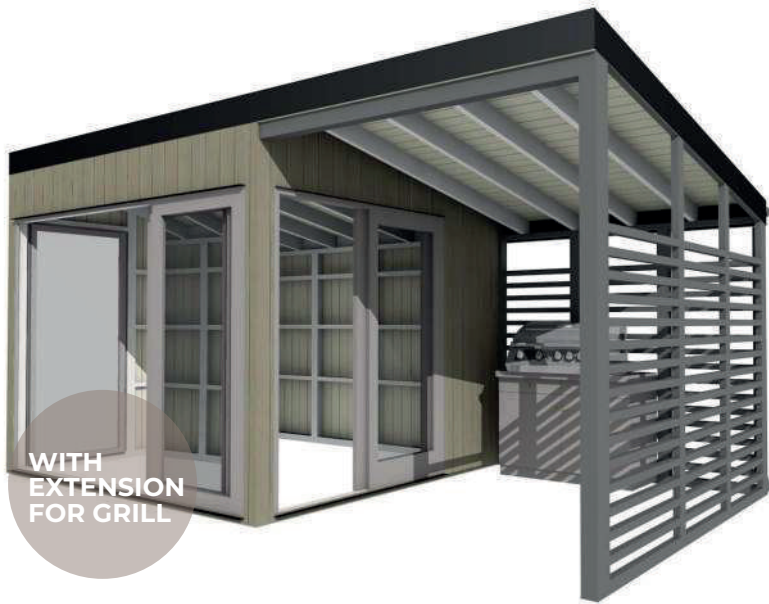
Side and back wall view



Inside view

EASYCUBE 3 x 3

WITH 2 x 3 GRILL EXTENSION

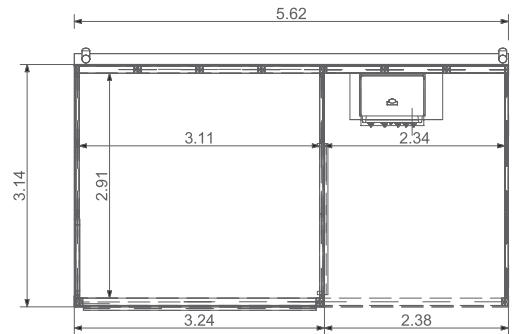


WALLS

Easy cube walls: Front and back wall frames 45 x 95 mm; Side walls frames 45 x 45 mm; Panels covered with outside 18 x 145 vertical spruce cladding (tongue and groove);

Extension walls: Back wall frames 45 x 95 mm; Side wall frames 45 x 45 mm; Horizontal sunscreen walls consists of 45 x 45 mm wood.

PLAN

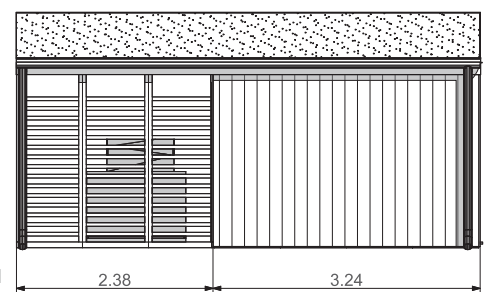


DRAWINGS

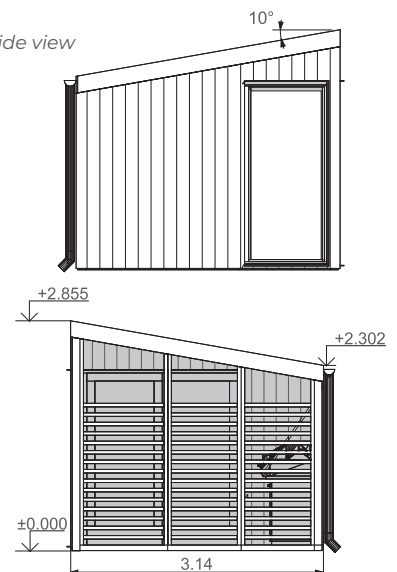
Front view



Back view



Side view



STANDARD SET

-
- Roof panels from spruce;
- Self-adhesive bitumen membrane for roof covering;
- Roof, door and windows tin finishing;
- Wall panels from spruce with impregnated bottom parts;
- Decorative sunscreen walls with impregnated bottom parts;
- 1 pc of aluminum glass wall Alutech (1000 x 2200 mm);
- 2 pc of aluminum sliding doors system Alutech: front 3000 x 2200 mm (3 rails), side 1600 x 2200 mm (2 rails).
-

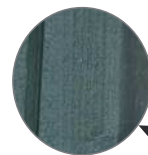
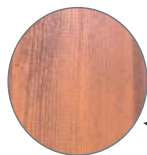
TECHNICAL SPECIFICATION

Shape	Rectangle
External dimension (W x L)	5620 x 3140 mm
Total high (H)	2855 mm
Inside area	15.85 m ² (9.05 + 6.79 m ²)
Room	1
Size of sliding door (W x H) front	3000 x 2200 mm
side	1600 x 2200 mm
Size of glass wall (W x H)	1000 x 2200 mm
Group of people	8 persons
Weight	1100 kg
Wood	Spruce

OPTIONS

PAINTED PRODUCT

PROFESSIONALLY SPRAYED FINISH The high-quality preservative finish is professionally spray applied in the factory to three sides of the board. More than 20 different colors, choose from **stains and paints**



The wood stain treatment shows the wood texture *The paint will cover the texture of the wood*

AVAILABLE TO ORDER FLOOR

Terrace floor: Made from corrugated spruce wood with frame;

Tongue and groove (28 mm).



ACCESSORIES

CAMPING PRODUCTS



WOODEN POUF

The pouf is made of spruce wood with spacing between the plates, so air circulates easily and ensure good ventilation.



TABLE

The table is made of spruce wood. Table has a stable base: the feet are connected additional details. Modern design and the charm of natural wood perfectly complicated camping products



DOUBLE BED - SOFA

The double bed is made of spruce wood. Double bed can modified into a sofa bed with support. Modern design and the charm of natural wood perfectly complicated camping pods.



SINGLE BED

The single bed is made of spruce wood. Bed easily fastened to the wall. Modern design and the charm of natural wood perfectly complicated camping products



BENCH

The bench is made of spruce wood is sturdy and reliable. The bench has the support legs 5, so it is stable. Modern design and the charm of natural wood perfectly complicated camping products



**CABINET
2340 x 683 MM**

The cabinet is made of spruce wood is sturdy and reliable. Simple design and the charm of natural wood perfectly complicated camping products What you get: worktop (from glued wood panels) cabinets, cabinet doors, hinges and knobs Dimensions (L x W x H): 2340 x 683 x 808 mm.



DRAWER UNDER THE SINGLE BED

The drawer is made of spruce wood is sturdy and reliable. Simple design and the charm of natural wood perfectly complicated camping products



**CABINETS
1435 x 600 MM
900 x 600 MM**

Cabinets are made of glued wood panels. Included: frame, table top (from glued wood panels), cabinets with doors, hinges and knobs.



**SHELVE ABOVE DOUBLE
BED (CLOSED)**

The shelf is made of spruce wood. The shelf is closed with the door from the side of the room. From the inside (from the side of the bed) there is a niche for fitting things.

Available in Insulated Camping Pod 3.2x5.9m.

CAMPING PRODUCTS



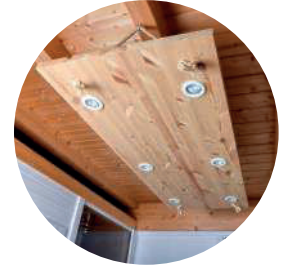
BENCH TRANSFORMING INTO A SINGLE BED

This multi functional piece of furniture provide great seating and sleeping space (bench easy transforms into a bed).



FLOWER POT "DECOR"

Flower Pot made from 20 segments (each of them is 45x45 mm) to make it look more decorative. Suitable for indoor and outdoor use. This flower pot attractively fit into our modern line Garden cube and all other products.



CEILING LAMP FOR GLAMPING CUBE

Spruce wood pendant light to light up your Glamping Cube. Size: 1500x600 mm.



TABLE AND BENCHES SET

Modern design spruce wood table and benches set contains:

- Table on wheels (450 x 600 mm);
- Bench (450 x 1400 mm);
- Bench with backrest (800 x 1900 mm).



WHITE CUSHION SET

White imitation leather cushion set designed to fit table and benches set.



RAINWATER PIPES FOR GLAMPING CUBE

The rainwater pipes package includes straight gutter and all parts needed for installation. Down pipe package includes 2.5 m down pipe and all parts needed for installation. No need for exact measurements and calculations and easy to transport and install, as all components needed are packaged compactly in a single package, ensuring safe delivery and easy installation. **Rainwater pipes is made of plastic.** Color - antracite.



Interior example of camping Pod 2.4 x 4.8 m

CAMPING CABIN

A roof is made of six elements and covered with bitumen shingles

Double glazed windows

Rustic roof porch

The door is decorated with an original hexagonal window

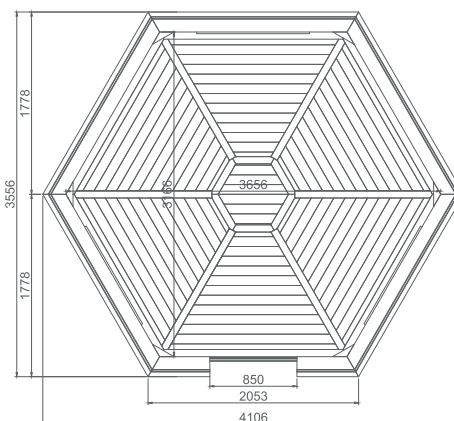
Cabin walls are made of rounded spruce boards

Floor is easily assembled from separate components



Roof window is not opening. The glass is clean and tempered, 8 mm thick

PLAN



ROOF

6 layer bitumen tiles consists of durable and highly resistant fiber glass base coated with polymer-reinforced bitumen mix made of high quality bitumen and aggregate. The top layer of tiles is surfaced with mineral granules that lend color to the tiles and ensure high UV-protection and other weather conditions resistance qualities. The granules are painted in high temperature using thermal method pigment being burned-in into the surface of granules what guarantees long

durability of the color. The bottom of tiles is coated with adhesive polymer-reinforced bitumen layer protected with easily removed silicon membrane. As a result of sun heat exposure the overlapped tiles stick to each other thus forming a double hydro-insulating layer, which guarantees excellent leak resistance of the roof. Bitumen tiles can be used both for new construction and roof repair work. You may choose black, green or red color bitumen tiles.

STANDARD SET

- Wall, floor, roof panels from spruce;
- Roof covered with bitumen shingles of your selected color;
- 3 double glass windows (1 of them is opening);
- Door with a lock and a hexagon window.

TECHNICAL SPECIFICATION

Shape	Hexagon – 6 corners
External dimension	4106 x 3556 mm
Total high	3062 mm
Inside area	9.2 m ²
Size of door (W x H)	780 x 1500 mm
Size of window (W x H)	880 x 510 mm
Group of people	2
Weight	1200 kg
Wood	Spruce
Assembling time	Two people in 6 hours

OPTIONS

- **Walls Height:** 1 or 2 extra boards in walls;
- **Opening Windows:** 1 from 3 (standard); 2 from 3; 3 from 3;
- **Insulated:** roof and floor;
- **Available tongue and groove floors;**
- **Roof panel with window:** 1-5 pcs.



ROOF COLOR



Black shingles

Green shingles

Red shingles

CAMPING CABIN

WITH 2 EXTENSIONS

Stylish Rustic-style entrance to the camping cabin. Door with hexagon double glazed window. The porch above the lockable door

Two extensions for your living ideas in rustic style

Cabin roof is made of six elements

The size of extension is 4.3 m² (L x W - 2.5 x 1.6 m)

THREE ROOMS INSIDE

Camping cabin walls are made of rounded spruce boards with the dimensions 45 x 145 mm

OPTIONS

Walls height: 1 or 2 extra boards in walls;

Available insulated roof;

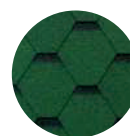
Available insulated floor;

Available tongue and groove floors;

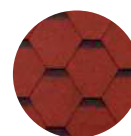
Roof Color



Black shingles



Green shingles



Red shingles

Opening windows: 3 from 5 (standard); 4 from 5; 5 from 5;

Curtains set: brown or blue;

Roof panel with window: 1-3 pcs.

STANDARD SET

Wall, floor, roof panels;

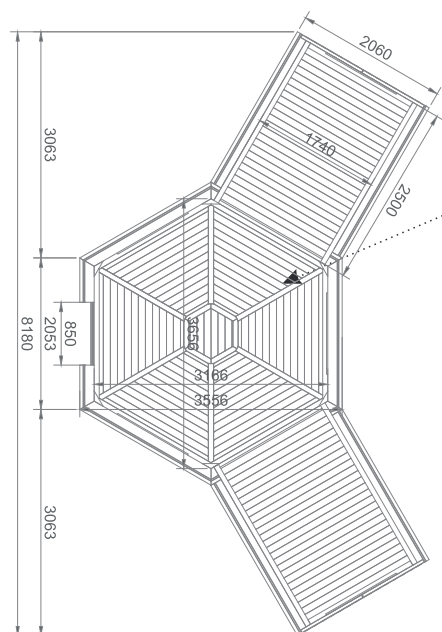
Roof covered with bitumen shingles of your selected color;

5 double glass windows (three of them are opening);

Lockable door with double glazing hexagonal window;

3 rooms: 6-corners cabin and 2 rectangular extensions.

INSIDE PLAN



TECHNICAL SPECIFICATION

Shape	Hexagonal + rectangle + rectangle
External dimension (W x D)	8150 x 4430 mm
Total high	3062 mm
Inside area	17.2 m ²
Size of door (W x H)	780 x 1500 mm
Size of window (W x H)	880 x 510 mm
Number of windows	5
Number of opening windows	3
Available	2-4 persons for comfortable living
Weight	170 kg
Wood	Spruce
The thickness of floor	18 mm
The thickness of walls	45 mm
The thickness of roof	18 mm

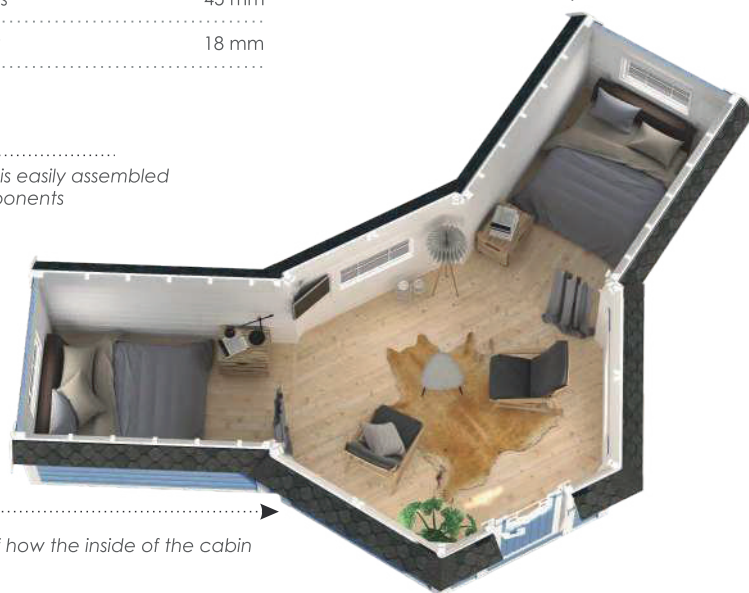
Floor, walls and roof is easily assembled from separate components

LAYOUT

A tiny and cozy and more spacious camping cabin with two extensions gives substantial space for all your belongings, both on a temporary or a permanent basis.

The cabin with two extensions is a bigger and more spacious structure, thus it offers more liveable spaces that you can use as a storage area.

This cabin are also good sources of campings. Three separate spaces make it possible to arrange the cottage to the living room, bedroom and bathroom spaces.



This is an example of how the inside of the cabin can be fitted



Interior example of camping cabin 9.2 with 2 extensions



BSVillage


[.com](http://www.bsvillage.com)

PISCINE - WELLNESS - OUTDOOR


www.bsvillage.com

BUSINESS SHOP S.r.l. a Socio Unico
Via della Repubblica n. 19/1 - 42123 Reggio Emilia (RE)
P.Iva e C.F. 02458850357 - Cap. soc. 60.000,00 € i.v.

 www.bsvillage.com

 0522 15 36 417

 info@bsvillage.com

 0522 18 40 494